

**19680 N. Luther Road  
Luther Oklahoma 73054**

**Wedding and Event  
Center for Sale**

## Property Information:

- 25 Acres of Land (MOL); \$1.40 PSF/Land
- Wedding & Event Center Building
- 7,200 Square Foot Gabled Roof Event Center
- New Construction Built 2016
- Office Out-Building Remodeled 2023
- For Sale at Just \$1,625,000



## Turn-Key Event Center

20 Minutes from  
Oklahoma City

Pasture and Woods

Water Features

Gated Access



US Route 66  
Intersection

**Call for details about the Broken Horn  
Ranch, the currently operating business  
with furniture, fixtures, and equipment.**

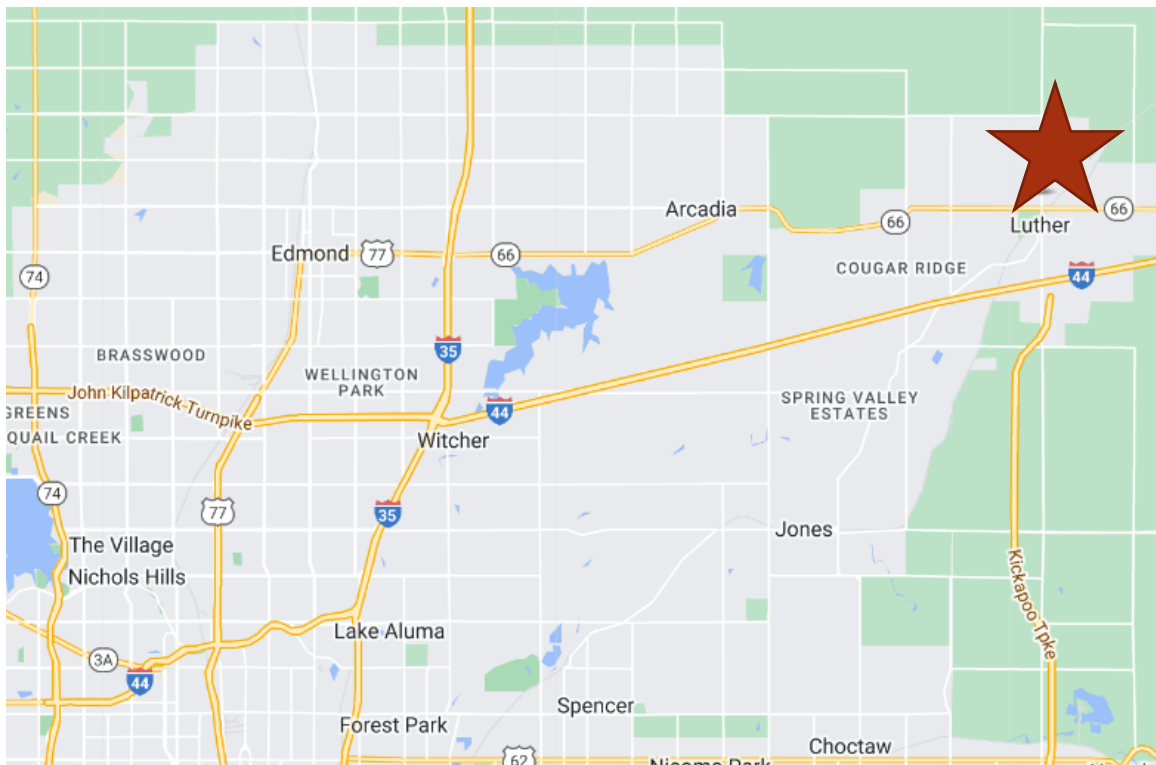
Randy Vaillancourt  
Managing Broker  
405-210-6772 (mobile)  
randy@avenuecre.com

**AVENUE**  
COMMERCIAL REAL ESTATE

5030 N. May Avenue #435  
Oklahoma City, OK 73112  
www.avenuecre.com

# 19680 N. Luther Road Luther Oklahoma 73054

- At US Highway Route 66
- 5 Minutes from Turner Turnpike Egress/Ingress
- Easy Southbound Kickapoo Turnpike Cloverleaf Access
- Community : Town of Luther, Oklahoma (townoflutherok.com)



**Photo Gallery: <https://www.brokenhornevents.com/photo-gallery.html>**

Randy Vaillancourt  
Managing Broker  
405-210-6772 (mobile)  
randy@avenuecre.com

**AVENUE**  
COMMERCIAL REAL ESTATE

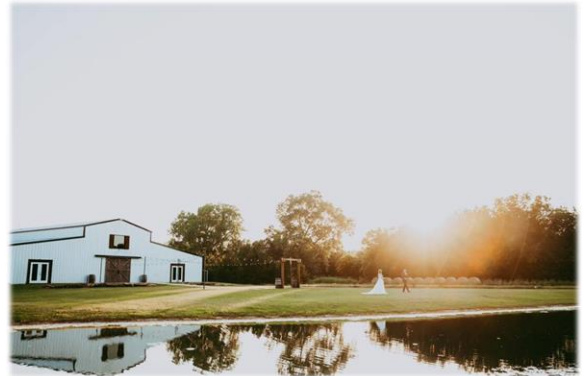
5030 N. May Avenue #435  
Oklahoma City, OK 73112  
[www.avenuecre.com](http://www.avenuecre.com)

19680 N. Luther Road  
Luther Oklahoma 73054

Wedding and Event  
Center for Sale

## Broken Horn Ranch

Photo Gallery: <https://www.brokenhornevents.com/photo-gallery.html>



Randy Vaillancourt  
Managing Broker  
405-210-6772 (mobile)  
randy@avenuecre.com

**AVENUE**  
COMMERCIAL REAL ESTATE

5030 N. May Avenue #435  
Oklahoma City, OK 73112  
www.avenuecre.com

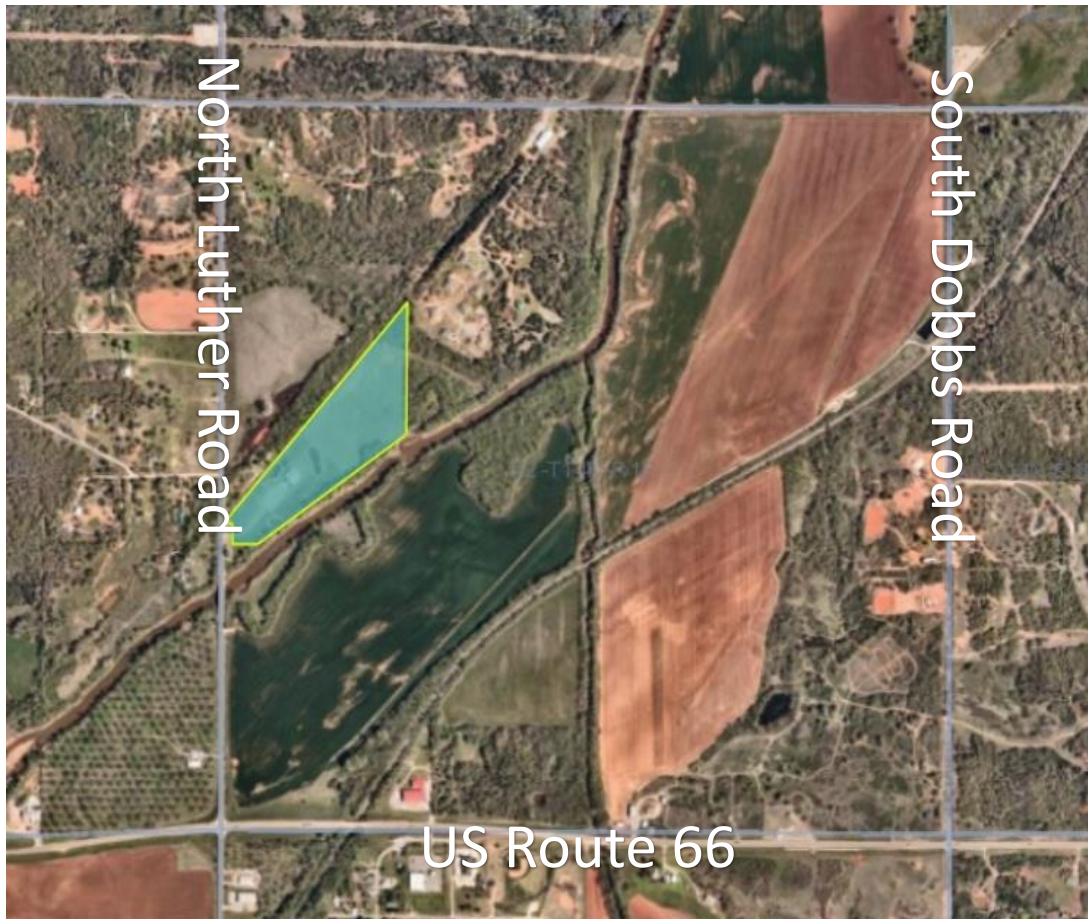
Although the information contained herein is believed to be correct, Avenue Commercial Real Estate and its employees disclaim any and all liability for representations and warranties, expressed or implied, contained herein and is submitted to errors and omissions.



19680 N. Luther Road  
Luther Oklahoma 73054

## Public Information

- Oklahoma County Assessor #R168642950
- Sect 22-T14N-R1E Qtr NW
- Zoned: AG1
- FEMA Map Identifier 40083C0575F 100 Year FA
- Town of Luther 405-277-3833 – [office@townoflutherok.com](mailto:office@townoflutherok.com)
- [Part-12-Planning-Zoning-and-Development.pdf \(townoflutherok.com\)](#)



Randy Vaillancourt  
Managing Broker  
405-210-6772 (mobile)  
[randy@avenuecre.com](mailto:randy@avenuecre.com)

**AVENUE**  
COMMERCIAL REAL ESTATE

5030 N. May Avenue #435  
Oklahoma City, OK 73112  
[www.avenuecre.com](http://www.avenuecre.com)

19680 N. Luther Road  
Luther Oklahoma 73054

Wedding and Event  
Center for Sale

## Elegant and Rustic



Randy Vaillancourt  
Managing Broker  
405-210-6772 (mobile)  
randy@avenuecre.com

**AVENUE**  
COMMERCIAL REAL ESTATE

5030 N. May Avenue #435  
Oklahoma City, OK 73112  
www.avenuecre.com

Although the information contained herein is believed to be correct, Avenue Commercial Real Estate and its employees disclaim any and all liability for representations and warranties, expressed or implied, contained herein and is submitted to errors and omissions.